

ZAMBA



# Urbanization

# Code Requirements

A large array of blue solar panels is installed on a roof, extending from the bottom left towards the top right. The panels are arranged in a grid pattern with white lines. The background is a bright blue sky with scattered white, fluffy clouds. The text "Code Requirements" is centered over the middle of the image in a white, bold, sans-serif font.



# New & Existing Buildings

A young woman with long dark hair and black-rimmed glasses is sitting on a couch, smiling as she works on a silver laptop. She is wearing a white, textured knit sweater and holding a white mug with both hands. The background is a bright, cozy living room with wooden furniture and a lamp. The word "Comfort" is written in a large, white, sans-serif font across the center of the image.

**Comfort**

HVAC





HVAC



**HVAC**



A detailed HVAC floor plan showing various rooms and their ventilation requirements. The plan includes labels for supply (S-1) and return (R-1, R-2) airflows, along with specific dimensions and CFM values. A large white text overlay is centered on the plan.

**Design Practices**

S-1  
18"x6"  
100 CFM

S-1  
18"x6"  
100 CFM

5'0"  
32 50

R-2  
4'0"  
25 CFM

4'0"  
35 CFM

R-2  
4'0"  
30 CFM

R-1  
12" x 10"

R-2  
4'0"  
30 CFM

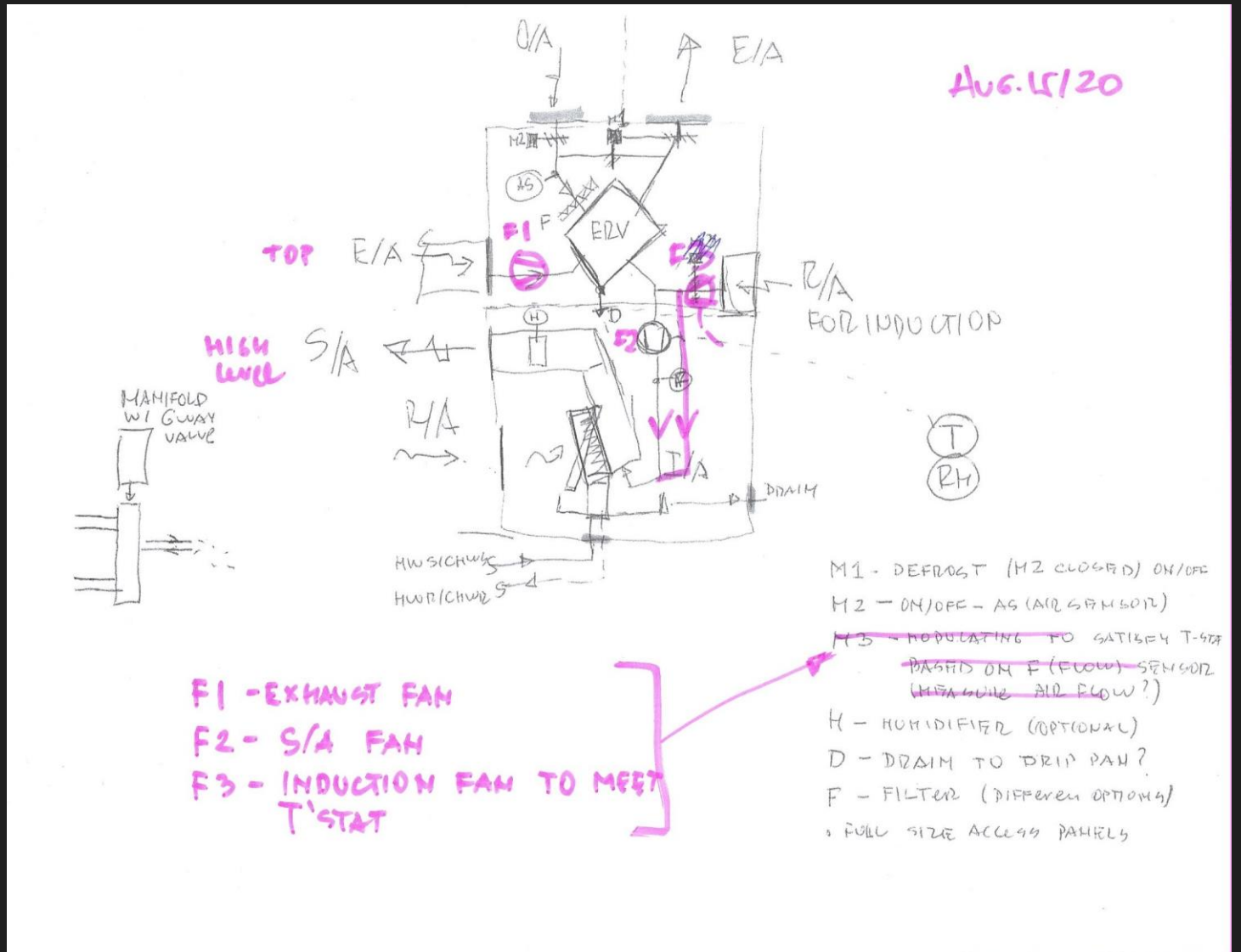
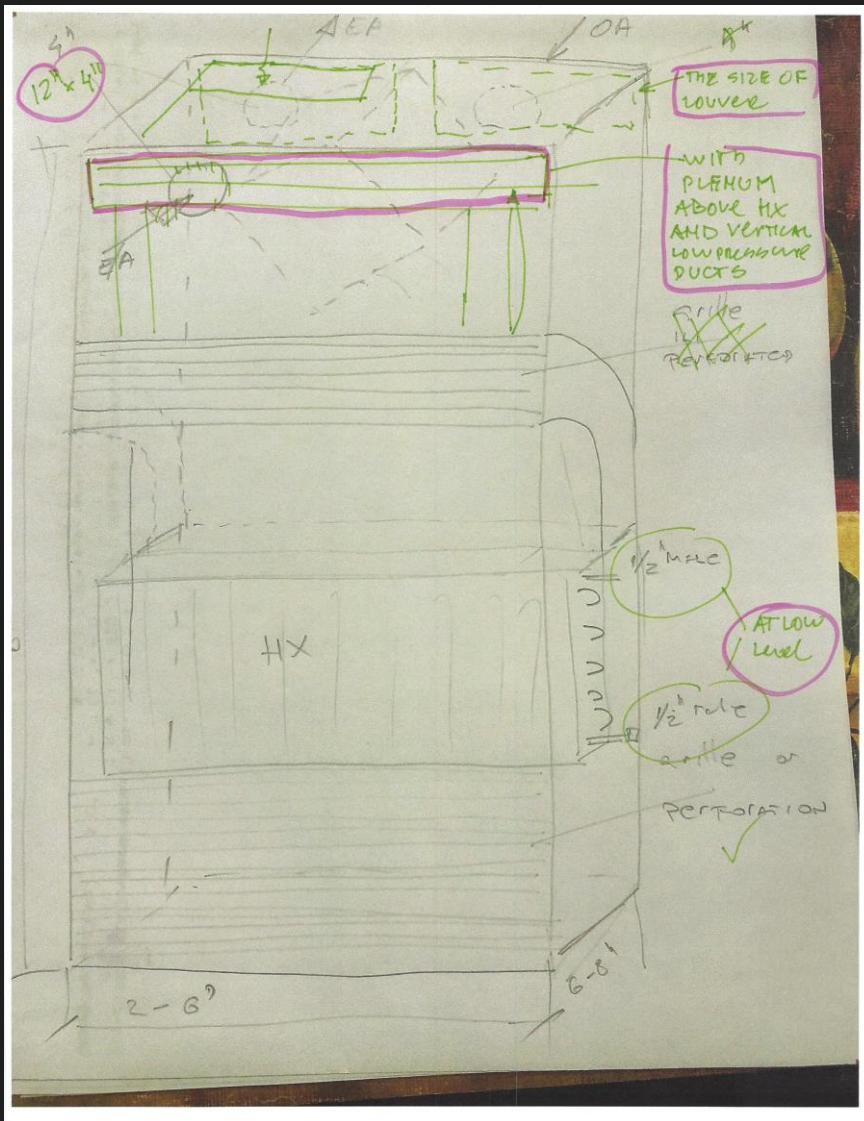
R-1  
12" x 10"

5'0"  
30 CFM

R-1  
12"X10" S/A GRILL  
HIGH LEVEL CWV  
160 CFM PER LEV

FG-1

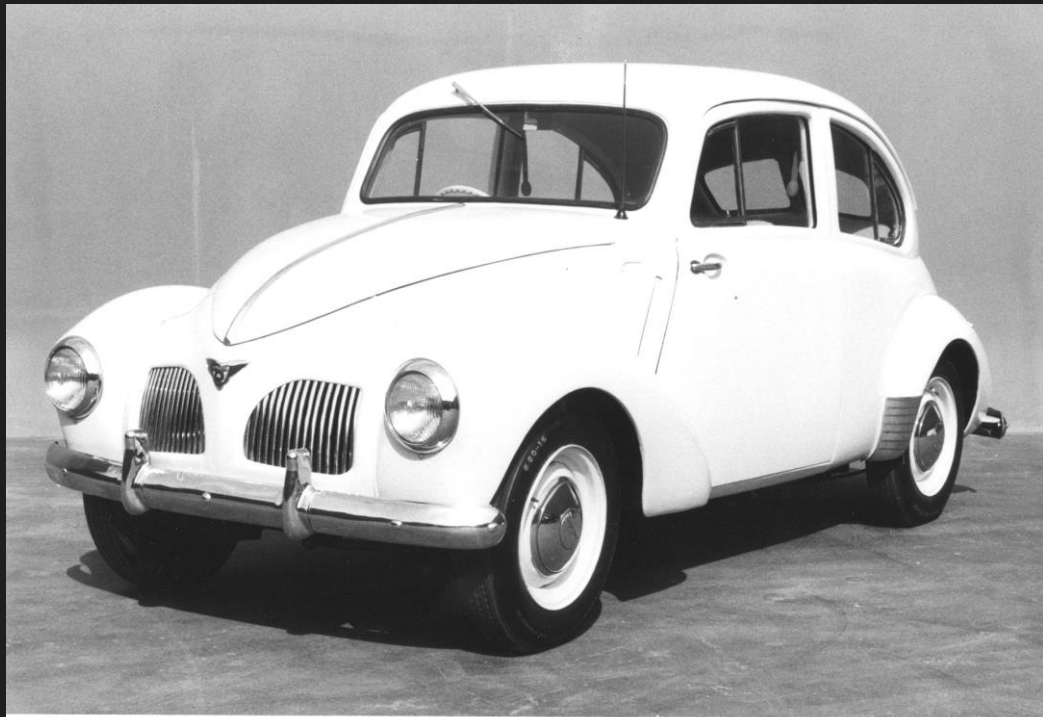
**Impossible?**



August 15, 2020





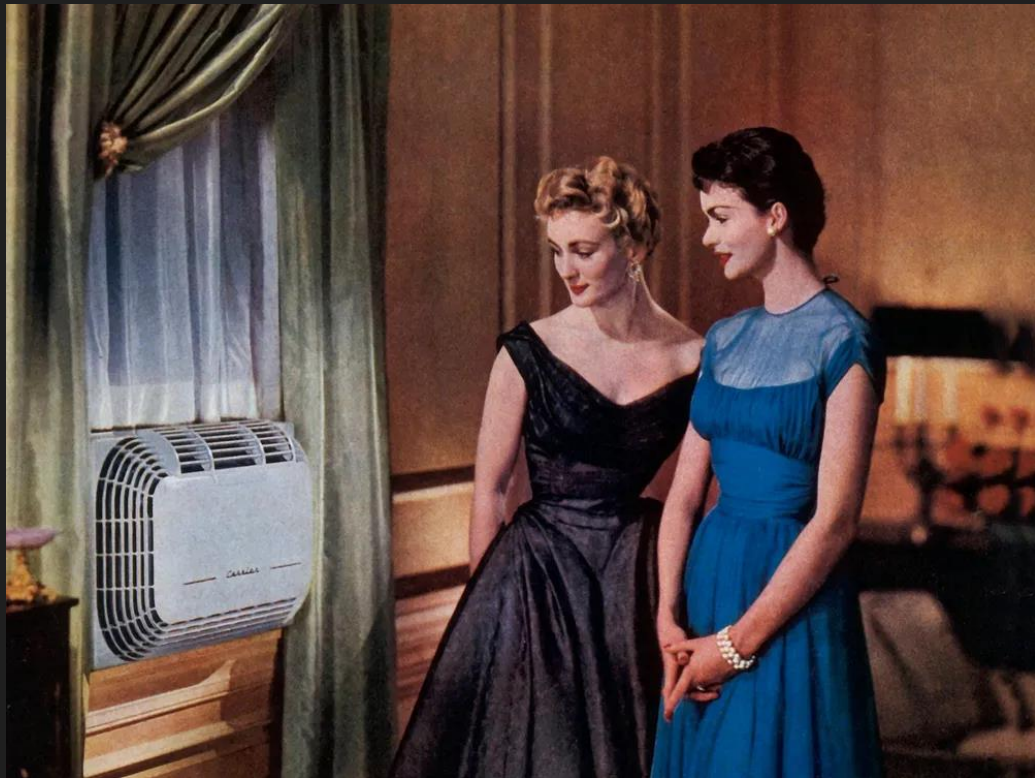


TOYOTA SA (marketed in 1947)  
トヨタ SA型 乗用車 (昭和22年製) '73.10

1947



2023



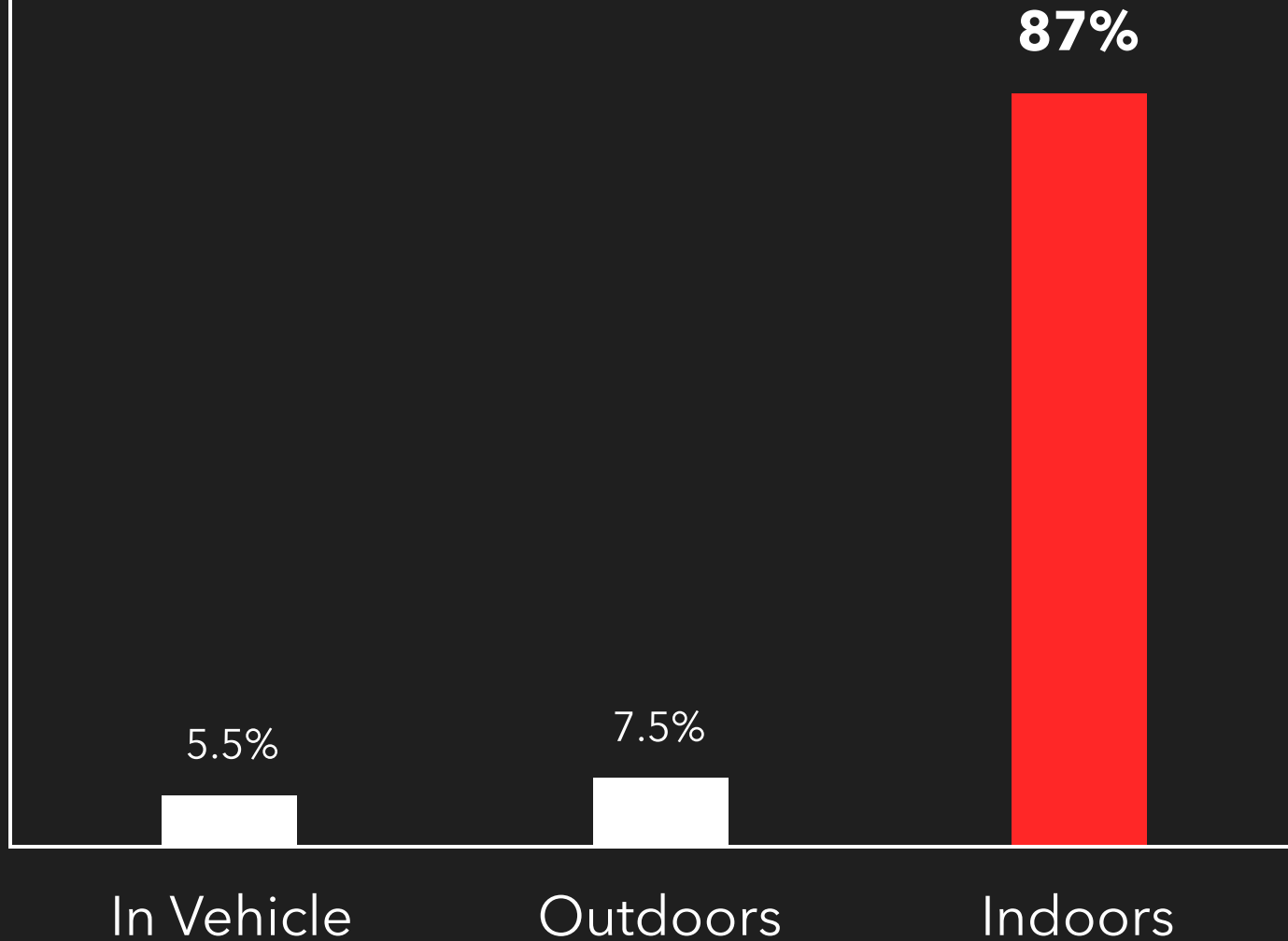
1947



2023

# Where do people spend their time?

SOURCE: NHAPS



**We spend  
87% of our  
time indoors.**



"It's only impossible until you do it."



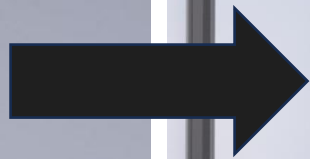
# Model N

The future of indoor living.

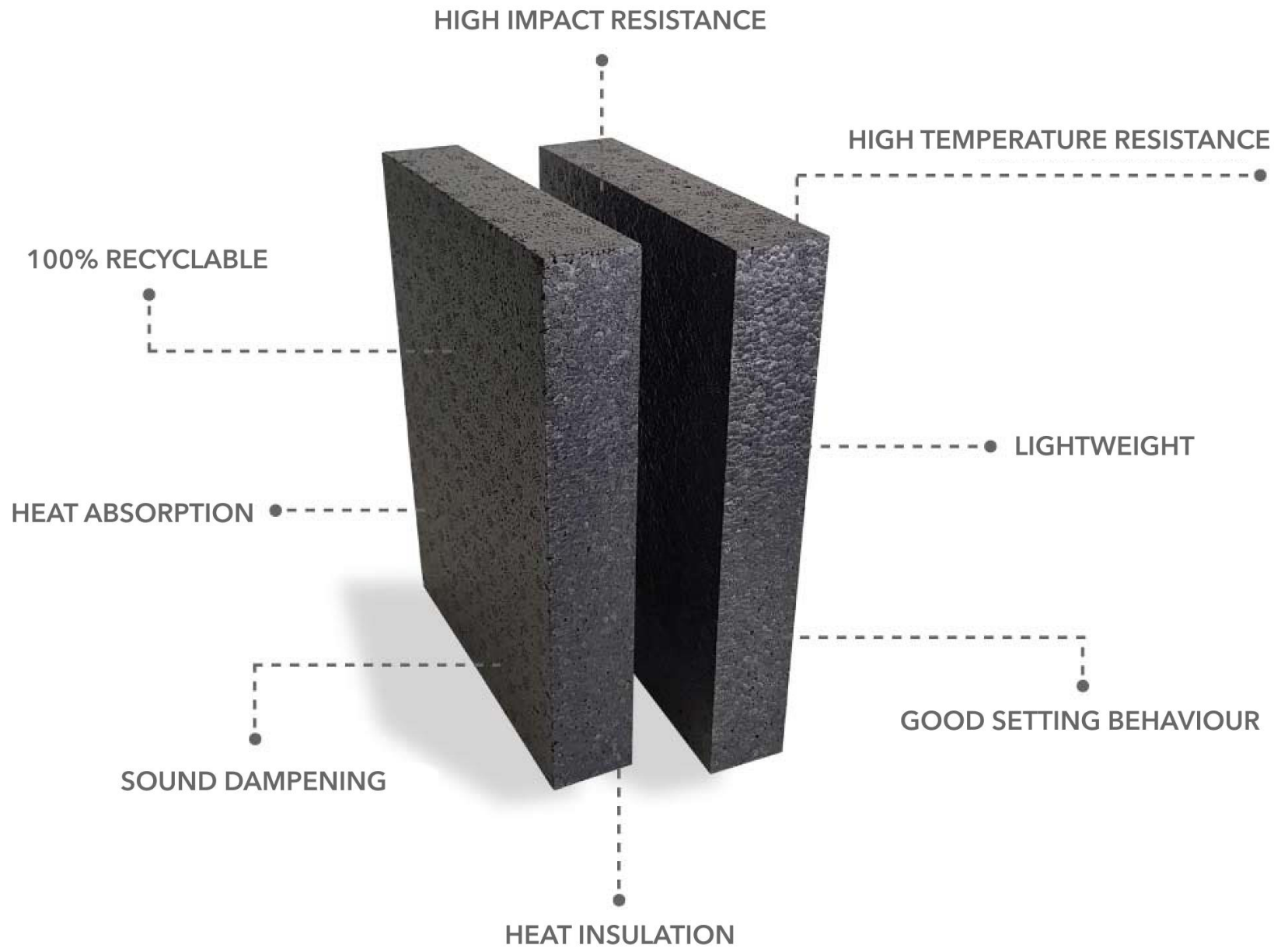


Space





Enclosure





Comfort

# Ventilation

Hydronic

**2 Pipe**

**vs**

**4 Pipe**

**50%**

**Pipe Savings**

Condensate

# Sensors

**39**

**total sensors**

**1**

**ultrasonic humidifier**

**1**

**bipolar ionization**

**2**

**pumps**

**3**

**fans**

**4**

**valves**

**5**

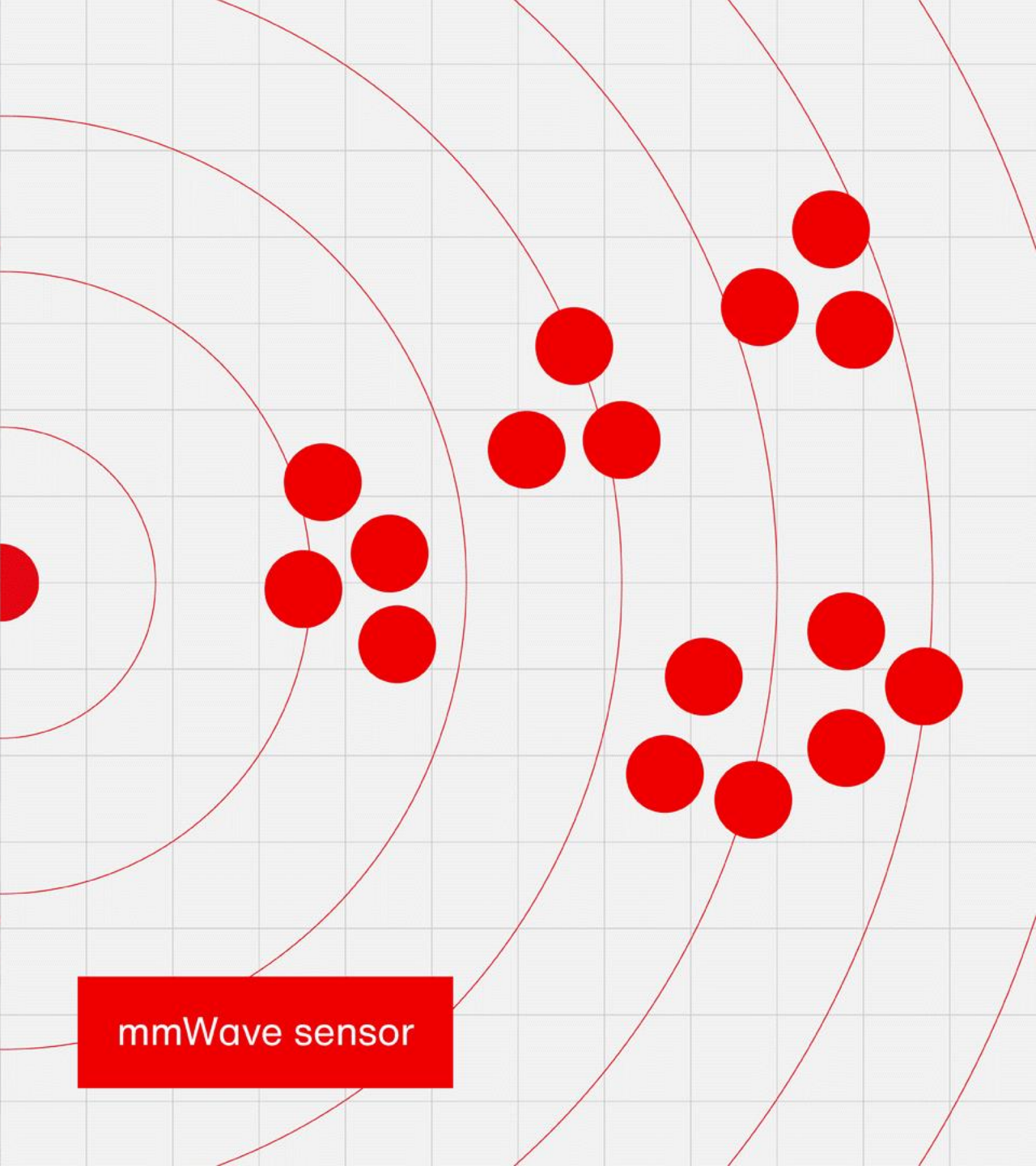
**dampers**

Controls





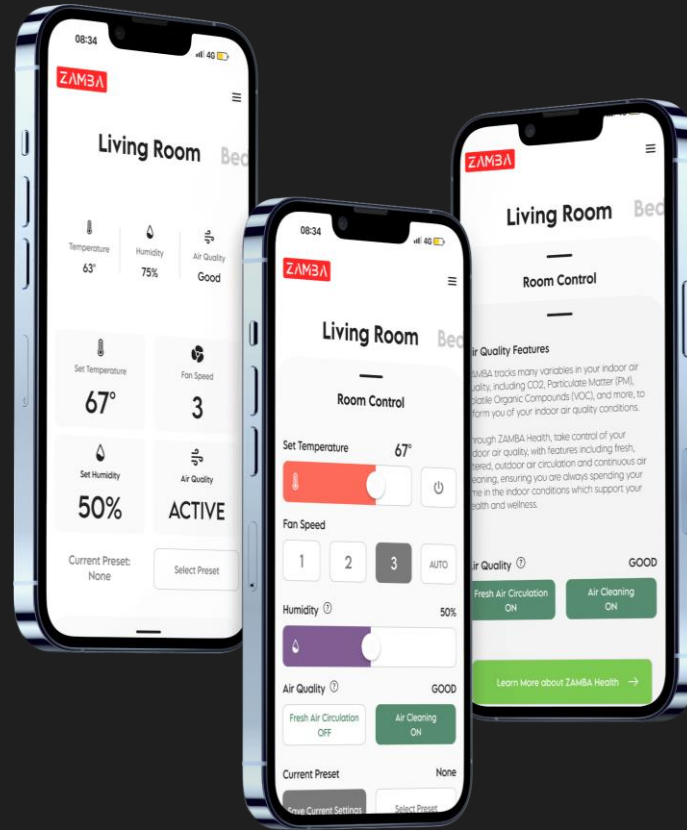
CCTV



mmWave sensor



Thermostat



App



Voice Control

Maintenance

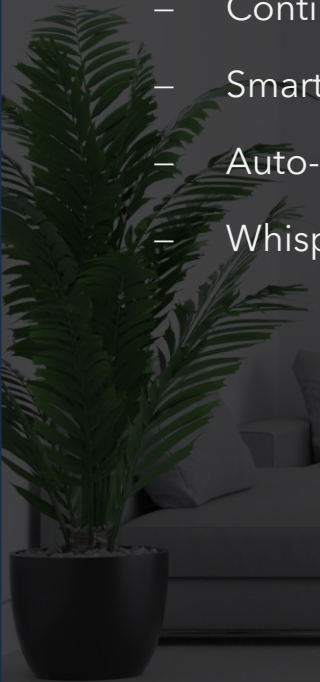


# Model N

- Customizable Surface Finishes
- Flexible Applications
- Reduction of Ductwork and Drop Ceiling
- Lightweight, Resistant Design
- Continuous, Filtered Outdoor Air Supply
- Smart Sensor Array
- Auto-Adjusting, High-Efficient Performance
- Whisper-Quiet Operation

# Benefits

- Flexible Interior Design
- Building Envelope Size & Performance Reduction
- Extra floors in same building height
- Pipe Savings
- Elimination of Condensate Drains
- Low Voltage
- Individual Room Comfort Control
- Simple Installation & Maintenance



ZAMBA